

SOFT LANDSCAPE/PLANTING KEY

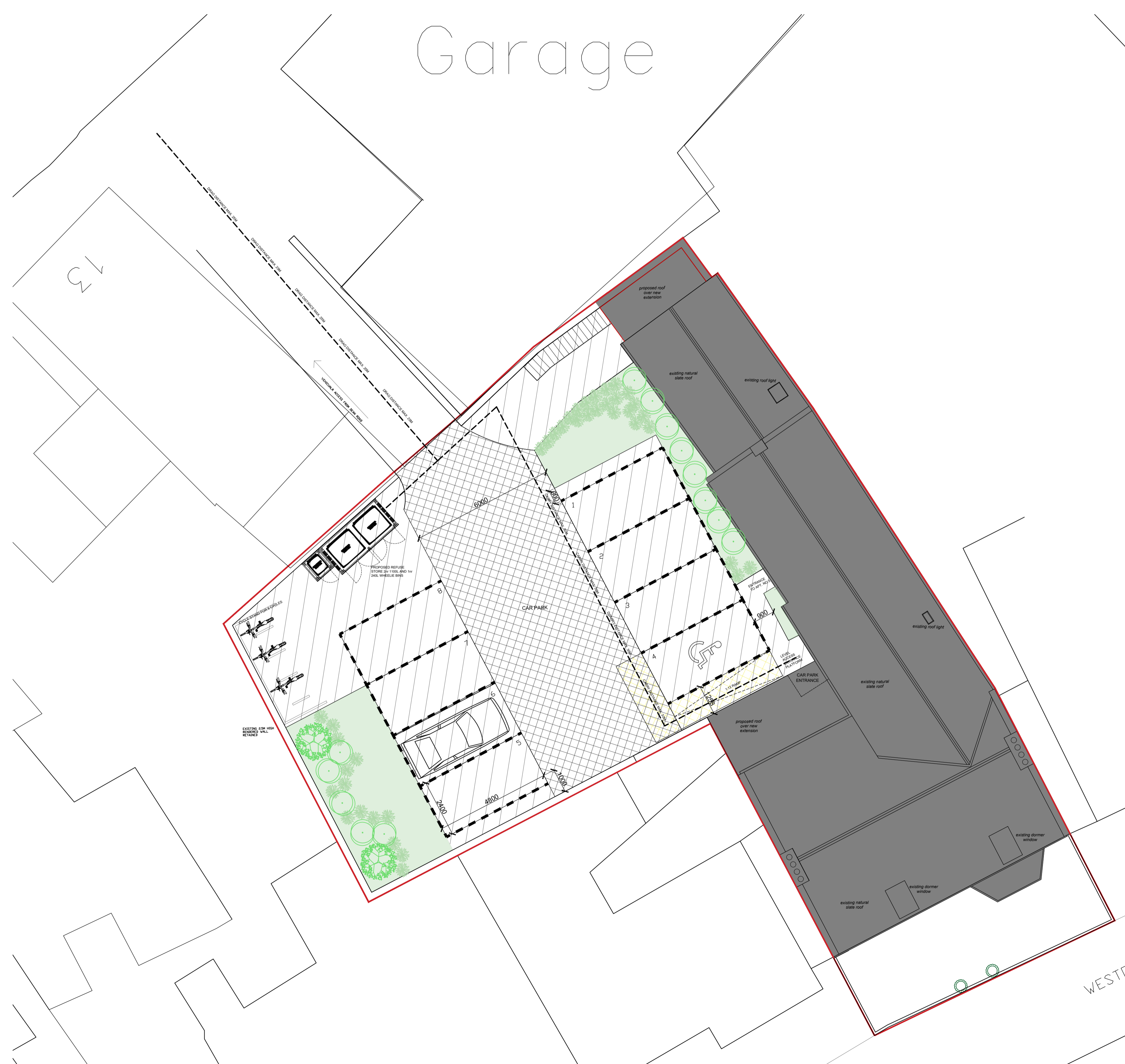
PLANTING SYMBOL	APPEARANCE	TYPE
		SAXIFRAGACEAE-ASTILBE CHINENSIS HARDY PERENNIAL-HT./SPREAD 0.5-1M (2-5YEARS) LOAM-PH. ACID, ALKALINE, NEUTRAL
		ADOXACEAE-VILBURNUM TINUS 'EVE PRICE' HARDY EVERGREEN-HT./SPREAD 1.5-2.5M (10-20YEARS), LOAM, CLAY, SAND, CHALK-PH. ACID, ALKALINE, NEUTRAL FULL/PARTIAL SUNSHADE
		MAGNOLIACEAE- MAGNOLIA 'MERRILL' HARDY PERENNIAL-HT./SPREAD 4-8M (20-50YEARS), LOAM, CLAY, SAND, PH. ACID, NEUTRAL, PRUNING- MID SUMMER FULL SUN/ PARTIAL SHADE/ SHELTERED

NOTE: INSTALLATION OF PLANTING BY SPECIALIST LANDSCAPE CONTRACTOR, DURING DORMANT PERIOD.

MAINTENANCE REGIME TO BE DETERMINED BY LANDLORD.
REGULAR PRUNING TO BE UNDERTAKEN TO ENSURE LARGER PLANTS ARE CONTAINED.

HARD LANDSCAPE/ MATERIAL KEY

HATCHING	TYPE
	TARMAC COLOUR 1 - TO BE CONFIRMED
	TARMAC COLOUR 2 - TO BE CONFIRMED. DOTTED LINES DEMARK WHITE LINING



S4	P01.04	26.03.20	ME	DB	AMENDED TO SUIT REVISED SURFACE TREATMENT
S4	P01.03	26.02.20	ME	DB	AMENDED TO SUIT REDUCTION OF 4th DWELLING RESULTING IN LOSS OF 2NR PARKING BAYS
S4	P01.02	12.02.20	ME	DB	AMENDED TO SUIT REVISED LAYOUT
S4	P01.01	01.11.19	ME	DB	SITE LAYOUT AMENDED TO SUIT PRE-APPLICATION COMMENTS
[S4]	[P01]	19/08/19	GS	DB	1. FIRST ISSUE

BLAKE HOPKINSON ARCHITECTURE + DESIGN

BLAKE HOPKINSON ARCHITECTURE LLP 1637463
NORTH SHIELDS, TYNE & WEAR - 0191 2570022 - www.bharchitecture.co.uk

BHA Project No:
RES736

Project Name:
**SIR WILLIAM FOX HOTEL
5 WESTOE VILLAGE
SOUTH SHIELDS**

Drawing Title:
PROPOSED LANDSCAPE PLAN

Model File Name: RES736-BHA-00-ZZ-M2-A-1500

Drawn By: GS	Date Drawn: 16/08/19
Checked By: DB	Date Checked: 19/08/19
Scale at A1: 1:100	Suitability: S4
	Revision: P01.04

File Name:
RES736-BHA-00-ZZ-DR-A-2002

© Blake Hopkinson Architecture L.L.P.